



19th Jan 2017

Richmond River Chapter
OzFish Unlimited
[REDACTED]

Dear Sir / Madam,

Re : Response to draft Coastal Management State Environmental Planning Policy (SEPP), coastal wetland mapping, draft section 117 Ministerial direction

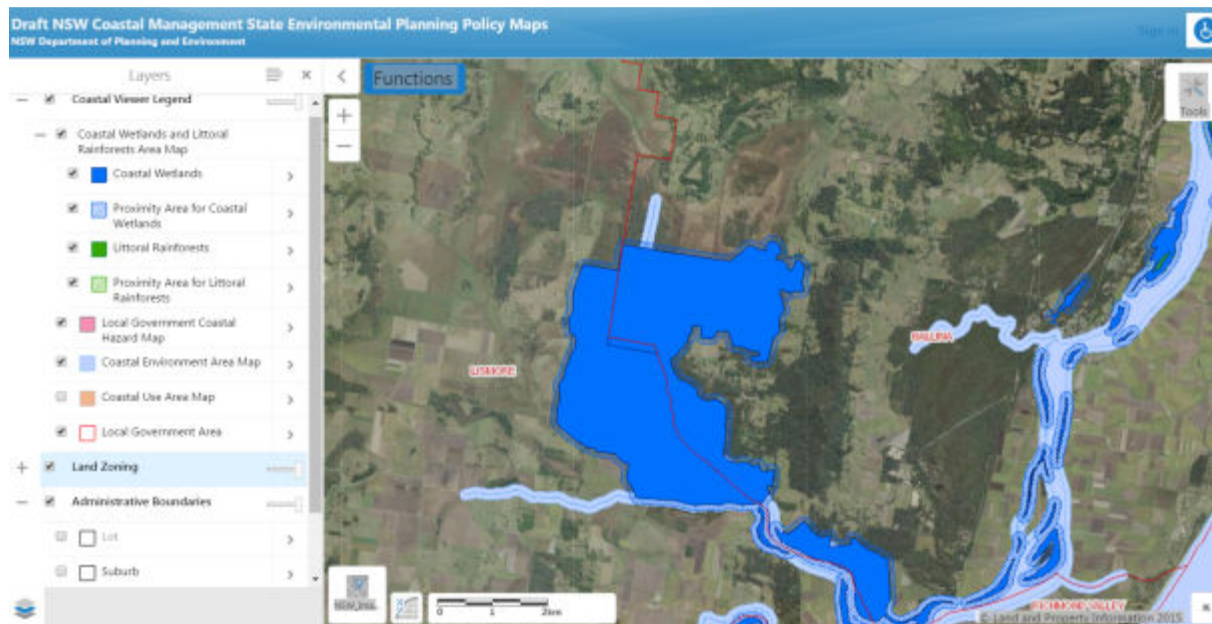
Dear Sir / Madam,

The Richmond River Chapter of OzFish Unlimited respectfully submits the following comment in response to the above subject and Ministerial direction (117). We would preface that we initially supplied comment during the public comment period for the draft CPA during 2016 and included in acceptances to this draft.

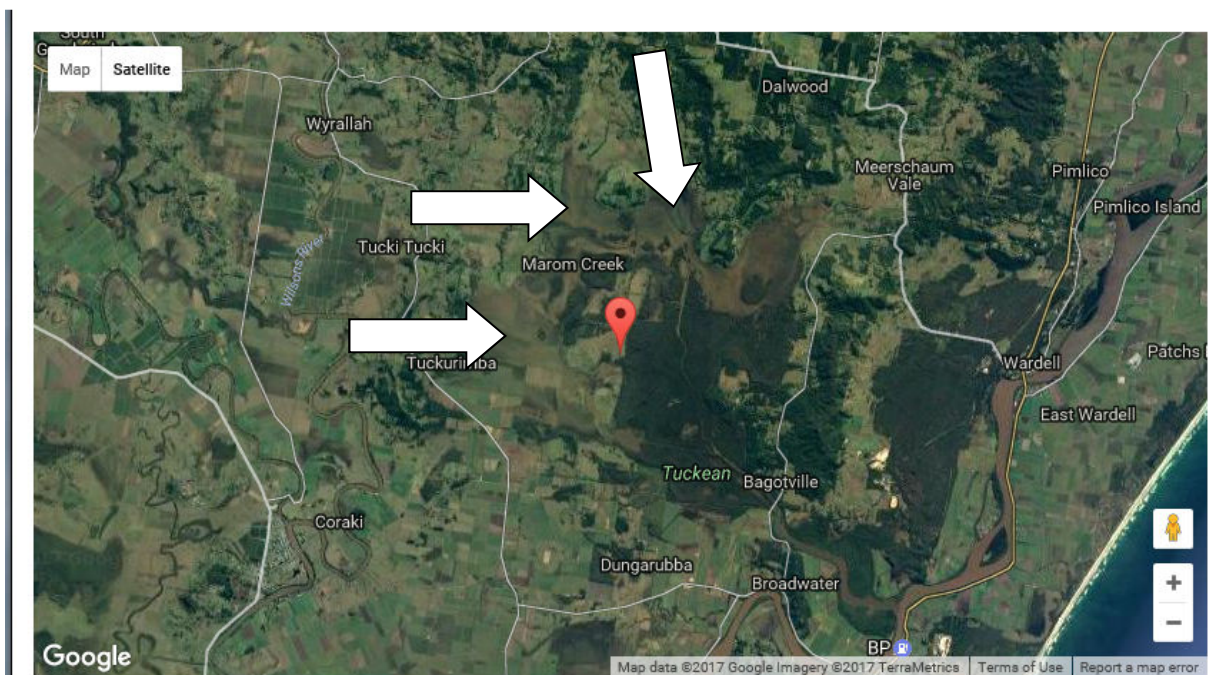
In response to the draft on SEPP coastal wetland mapping and your invitation to submit we note the designated wetland areas via your portal mapping system does not include areas of wetland that were previously flooded prior to early 70's. Specifically (see insert map) the Tuckean Swamp area within our Richmond Floodplain (Far North Coast NSW). The area identified as potential wetland for future rehabilitation is limited to the Crown Land portion of the swamp only and does not include large areas that were previously flooded prior to May 1971. The areas outside the designated zone appear also not to be designated as coastal hazards, yet we have many years of monitoring data demonstrating the substantial acid discharges from these areas. Additionally, it appears that some other areas of our Richmond Floodplain, previously natural wetland and inundated, have not been included.

The Richmond River Chapter of OzFish Unlimited in conjunction with local constituent and county councils along with NSW National Parks & Wildlife are in the planning stages for rehabilitation of the Tuckean swamp. Minister Stokes (meeting with the local MP for Ballina Don Page and OzFish, Feb 2014) is well aware of the Tuckean swamp and was enthused with progress on this project. He also informed us at the time of CPA re-write with outcomes that should help us with the Tuckean project.

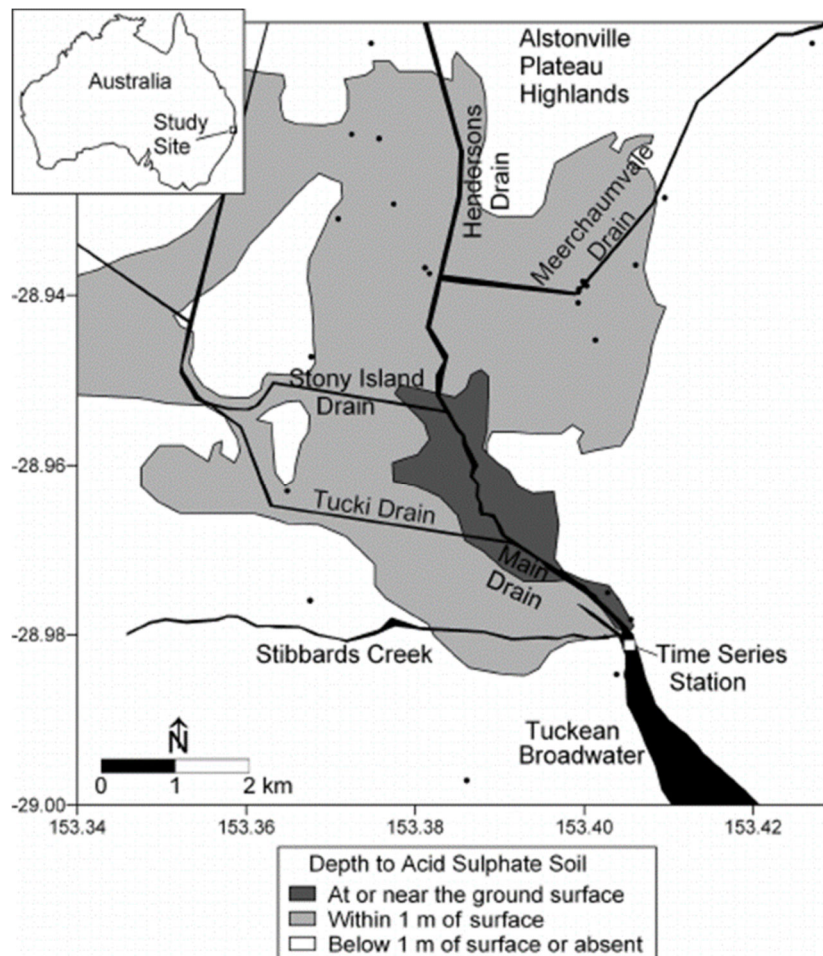
Hence our concern and question is, will the lack of identification of previous wetland areas within your current SEPP planning, specifically the Tuckean swamp, make it more difficult to rehabilitate and necessitate more challenges to appropriately protect them once restored?. Additionally, we submit that there are other areas of the Richmond Floodplain that have not been included.



Insert 1 : Tuckean Swamp



Insert 2: White arrows indicate areas of Tuckean Swamp not included in mapping currently.



Insert 3: Acid sulfate soil areas within Tuckean not currently labelled as coastal hazard

Many areas of Tuckean Swamp, and the greater Richmond River floodplain have been mapped to contain acid-sulfate soils which are a recognised hazard. The current mapping does not appear to account for these areas up and down the coast.

Thank you for the opportunity to submit this concern and comment on behalf of the Richmond River Chapter, OzFish Unlimited

Your Faithfully

John Larsson
Chair – Richmond River Chapter
OzFish Unlimited

